

Quick Installation Guide

IP Camera

Model No.: GD 2807

Please read this manual carefully before operation and keep it properly for future reference.

Before Installation

System Requirements

Item	Description
Operating systems	Windows 98 Windows 2000 Windows ME Windows NT 5.0 Windows XP Windows Vista
Web browser	Internet Explorer 6.0 or later version
Graphic cards	A PC graphic card installed with the software needs to support color conversion and zooming of images. Presently, the following graphic cards have been tested: Nvidia Tnt/Tnt2, Geforce Mx200/400/420/440 Fx5200/5600 series, ATI Radeon 7000/ 7200/ 7500/ 8500/ 9000/ 9200/ 9500/ 9600 series, MatroxG450/550 and INTEL845G/865G series. Please note that the drivers of graphic cards must support hardware zooming.
Network protocols	TCP/IP network protocols (HTTP, FTP, SMTP, TCP, UDP, IP)
Network interface cards	10/100 Mbps network interface card applicable to all network connections

Installing IP Camera

Precautions

Note: Before installing and using the product, please read the following precautions carefully and make sure they are fully understood.

- * Use only the power adapter attached with the product. Use of unauthorized power adapter may cause damage to your IP Camera;
- * Do not touch the lens of the IP Camera for it may leave fingerprint or stain on the lens and will cause vague or unclear images;
- * Do not turn the lens of the IP Camera at will. The optimum focus range has been set before the IP Camera is delivered out of the factory. If you turn the lens, it may cause incorrect focus and vague images;
- * IP Camera terminal shall be installed in an indoor environment.
- * For firmware upgrading or connection with an external alarm, refer to detailed instructions contained in the CD.

Hardware Installation

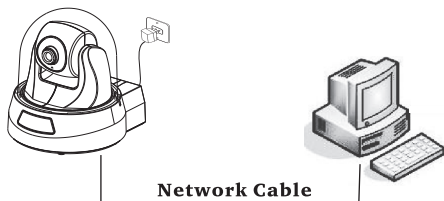
The IP Camera can be installed in two modes in the first installation and the user can choose either of them according to actual conditions:

Connect the IP Camera through the LAN interface of the DSL Router or a Hub.



1. Connect the network cable to the RJ45 network port of the IP Camera.
2. Connect the power adapter attached with the product to the power socket of the IP Camera and then connect the mains supply.

Connect the IP Camera directly with the network cable

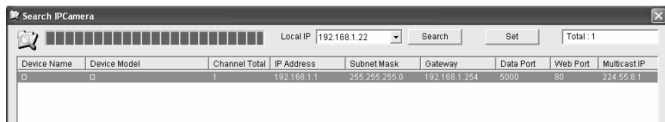


Software Installation

Searching IP Camera

Insert the CD contained in the packaging box of the IP Camera in the CD-ROM drive of the PC and copy the configuration tool **SearchIPCamera.exe** to your PC.

Double click the file to run the software. The following interface appears:



Click <**Search**> to search new IP Camera in the LAN. If the above information appears in the main window, it indicates the PC has found an IP Camera in the LAN.

Setting IP Address for IP Camera

By default, the IP Camera has an IP address of 192.168.1.1 and a subnet mask of 255.255.255.0. To support the access, the IP address of the PC and that of the IP Camera must be in the same network section. If you do not want to change the IP address of

the PC, it is required to re-set the IP address of the IP Camera. Select the IP Camera to access and click <Set>, or double click the IP Camera to set the IP address information, as shown in the figure below:

The screenshot shows a 'Network Parameter' dialog box with the following fields and values:

Device Model	
Device Name	ipcam
Channel Total	1
MAC	00-4A-20-8E-81-98
IP Address	192 . 168 . 91 . 1
Subnet Mask	255 . 255 . 255 . 0
Gateway	192 . 168 . 91 . 254
Data Port	5000
Web Port	80
Multicast IP	224 . 55 . 8 . 1
Multicast Port	5000
DNS	211 . 95 . 193 . 97
User Name	admin
Password	admin

The Device will auto restart, when network parameters changed!

Buttons: OK, Cancel

Note: With the SearchIPCamera software, user could not only retrieve equipment across different network sections, but also change network parameters. User can set the IP address of the IP Camera to be in the same network section as the PC. Therefore, it is unnecessary to modify the IP address of the PC. For example, if the IP address of the PC is 192.168.91.66, the user can set the IP in the parameter setting page of Search NVS software to 192.168.91.1, set the gateway and DNS to be the same

as those of the PC, and set both the user name and password to **admin**. To access the IP Camera, input 192.168.91.1 in the address bar of the IE. After modifying network parameters, click <OK>.

The system will give the following prompt:



Click <OK>, and the IP Camera will restart automatically.

Additional Note: Obtaining IP Address Configuration Information of the PC

Select the <Start Run> menu and enter “command ” in the Open combo box (applicable to Windows 95/98/ME/XP), and click <OK>. A command prompt window appears.

Enter “ipconfig -all” in the window and press <Enter>, and such information as IP Address, subnet Mask, Default Gateway, and DNS Server appear in the window, as shown below:

```
C:\Command Prompt
C:\DOCUMENTS\ADMINI~1>ipconfig -all
'd:\nplay.com' is not recognized as an internal or external command,
operable program or batch file.

Windows IP Configuration

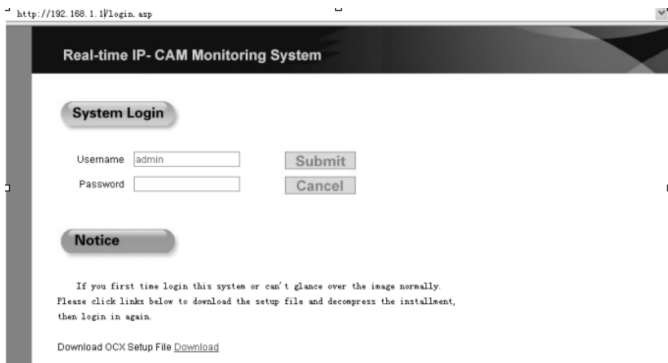
Host Name . . . . . : znh0
Primary Dns Suffix . . . . . :
Node Type . . . . . : Unknown
IP Routing Enabled. . . . . : No
WINS Proxy Enabled. . . . . : No

Ethernet adapter ????:

Connection-specific DNS Suffix . :
Description . . . . . : Intel(R) PRO/100 UE Network Connection
Physical Address. . . . . : 00-13-20-DA-06-AB
DHCP Enabled. . . . . : No
IP Address. . . . . : 192.168.98.136
Subnet Mask . . . . . : 255.255.255.0
Default Gateway . . . . . : 192.168.98.254
DNS Servers . . . . . : 211.95.193.97
                        211.94.33.193
```

Accessing IP Camera

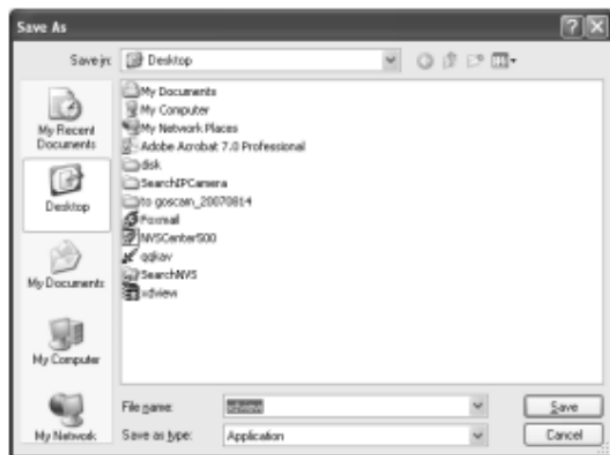
Enter the IP address of the IP Camera in the address bar of the Internet Explorer (IE), for example, the default address <http://192.168.1.1> or a modified IP address by search (for example, <http://192.168.91.1>), to log on to the IP Camera. After successful logon, the following interface appears:



When it is the first time to access the IP Camera via the IE (Internet Explorer), plug-ins shall be installed.

To install plug-ins:

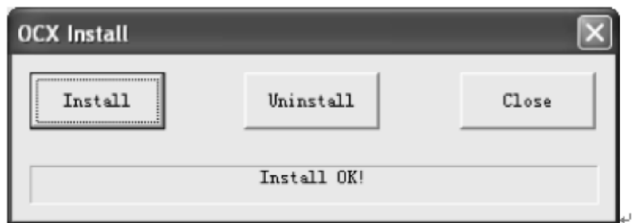
Click **Download** in the above figure to download the control compression package and save it to the desktop, as shown in the figure below:



Close all IE pages and double click the control installation file **xdview.exe** on the desktop, and the following interface appears:



Click **<Run>** and the click **<Install>**. Upon completion of installation, the system will give you a prompt, as shown in the figure below:



Note:

Click: Refers to clicking the left mouse button once.

Double click: Refers to quickly clicking the left mouse button twice.

Statement:

The product version used by the customer may differ from what is described in this manual. If you meet any problems that cannot be solved by reference to this manual, please contact our Technical Support Department or local dealers.

The content of this manual is subject to aperiodic update without prior notice.

