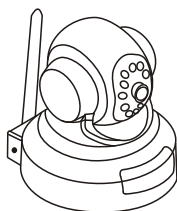
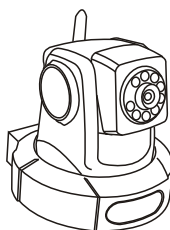


Quick Start Guide

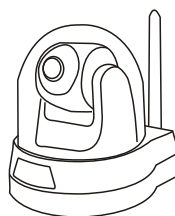
Network/IP Camera
(WiFi/cable optional)



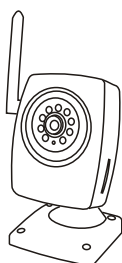
GD2805



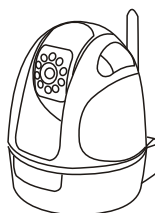
GD2806



GD2807



GD2808



GD2809

Version No.: 2.0

Please read this Quick Start Guide carefully before using this product!

CONTENTS

PACKING LIST	1
STRUCTURE	2
SETTING PARAMETER OF IP CAMERA	5
SEARCH NETWORK ADDRESS AND MODIFY PARAMETER	6
DOWNLOAD AND INSTALL THE PLUG-INS	13
LOGIN VISIT	14
INSTALLATION	14
FAQ	15
FCC INFORMATION	bottom

PACKING LIST

IP camera



GD2805



GD2806



GD2807



GD2808



GD2809



Wi-Fi Antenna
(optional, but compulsory for GD2807)



Network Cable



CD



AUDIO I/O Cable



Power adapter



Bracket
(optional)

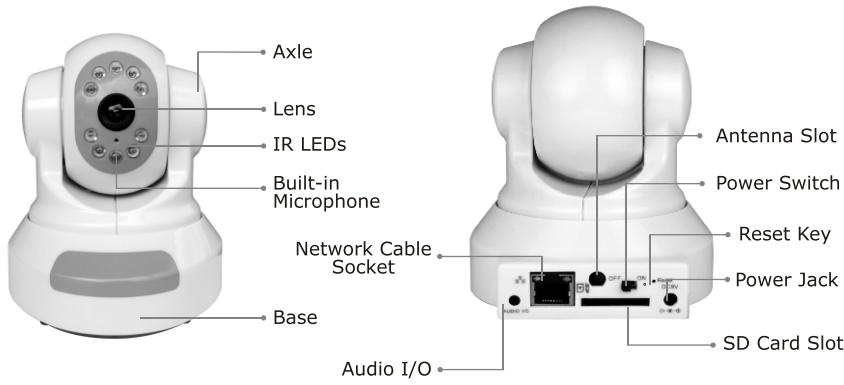


Metal Screws
(optional)

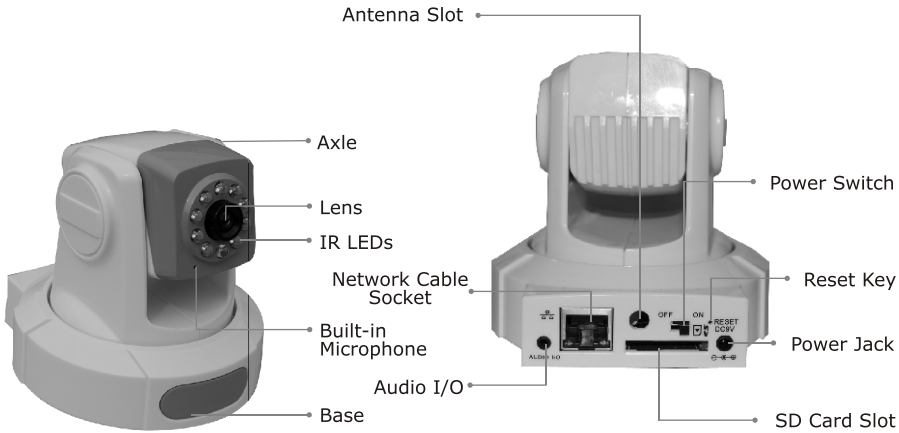
NOTE: the pictures is for reference only, please refer to real objects.

STRUCTURE

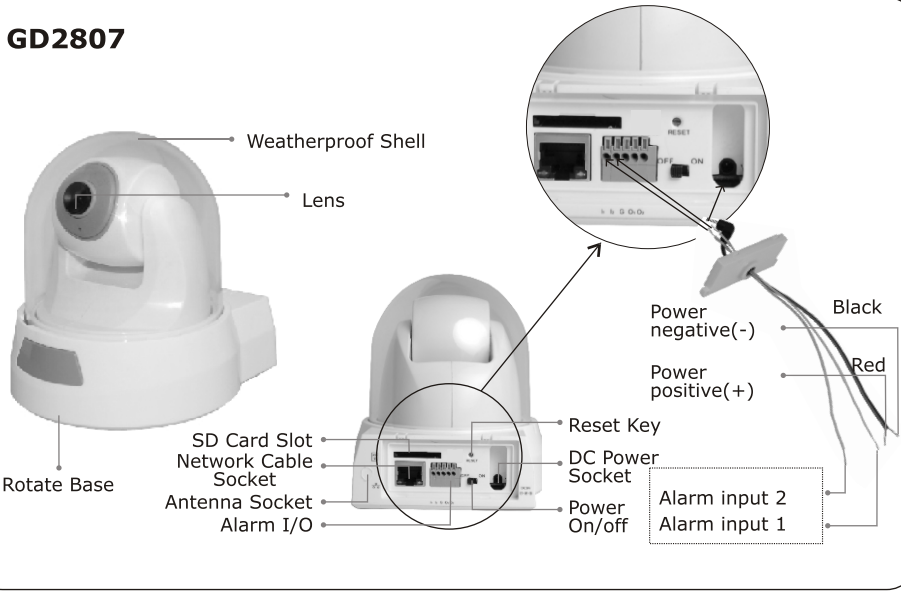
GD2805



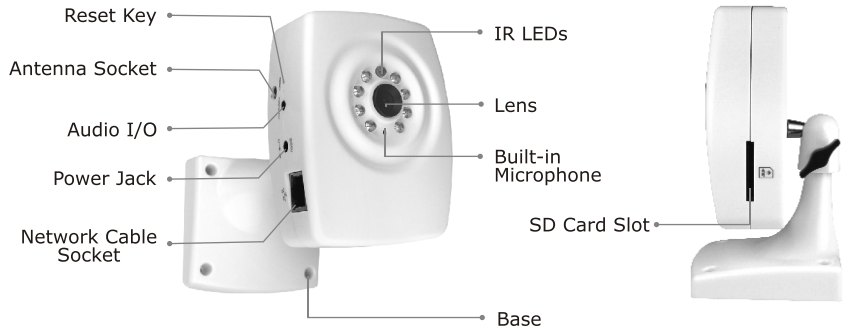
GD2806



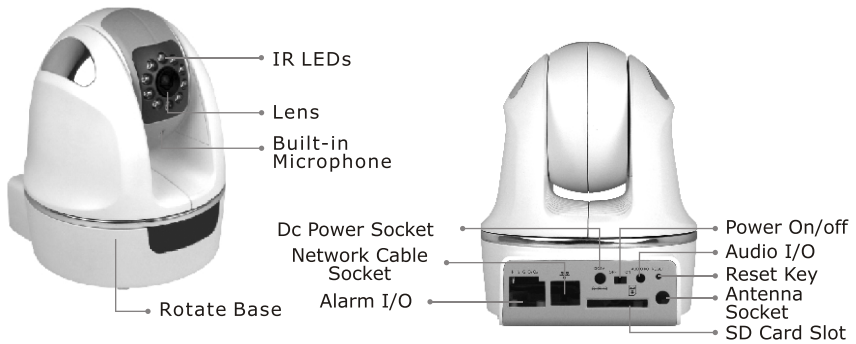
GD2807



GD2808



GD2809



Description of rear panel connection:



Ethernet interface




SD memory card slot

OFF/ON: Power switch (ON: turns on; OFF: turns off)

DC9V: Power input, DC 9V/1.5A

AUDIO I/O : Audio input/output. AUDIO IN is in yellow and AUDIO OUT is in red

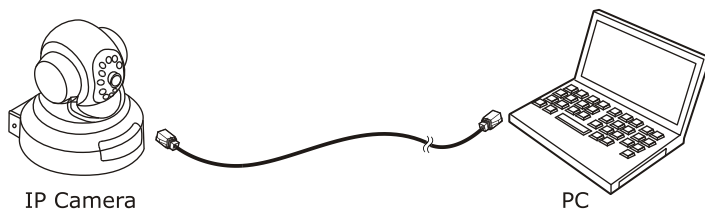
 : Parameter reset button. Press this button to reset to factory default settings. Use this button only when necessary

SETTING PARAMETER OF IP CAMERA

If it is the first time to use the IP Camera to set the parameter by PC, there are three mode as following:

Connection mode ①:

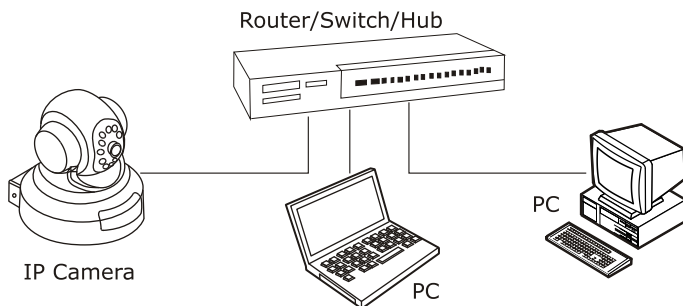
Connect the IP Camera to PC with the network cable.



- (1) Connect the IP Camera to PC with network cable;
- (2) Network indicator will be green in 5 seconds, which indicates connection finished.

Connection mode ②:

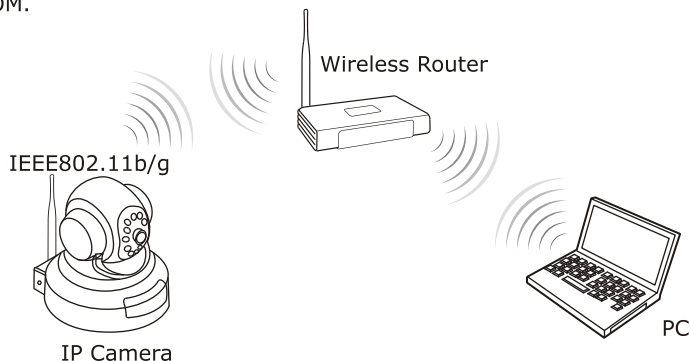
Connect the IP Camera through the LAN interface of the Switch/DSL Router or a Hub.



- (1).** Connect the RJ45 network port of the IP Camera to the LAN interface of the Switch/DSL Router or a Hub with the network cable .
- (2).** Connect the power adapter attached with the product to the power socket of the IP Camera and then connect the mains supply.

Connection mode ③:

This product can be matching WiFi module, support for wireless connectivity, with wireless AP devices(Such as wireless routers), wireless LAN components. When product leaving the plant the WiFi function default is the closure . The user need opens and completes WiFi in the wired connection's environment the related establishment(As Connection mode① and connection mode ②). Please refer to the user manual in the CD-ROM.

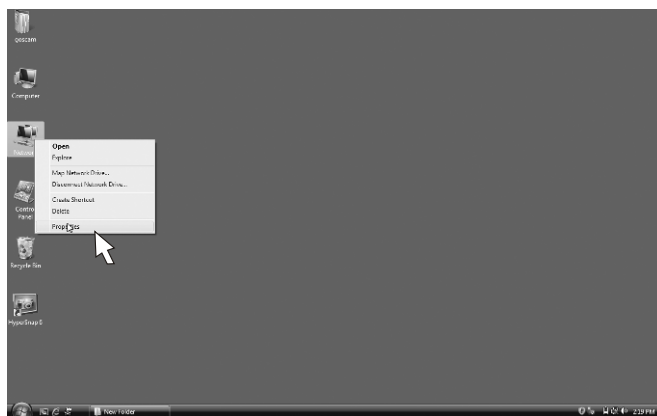


SEARCH NETWORK ADDRESS AND MODIFY PARAMETER

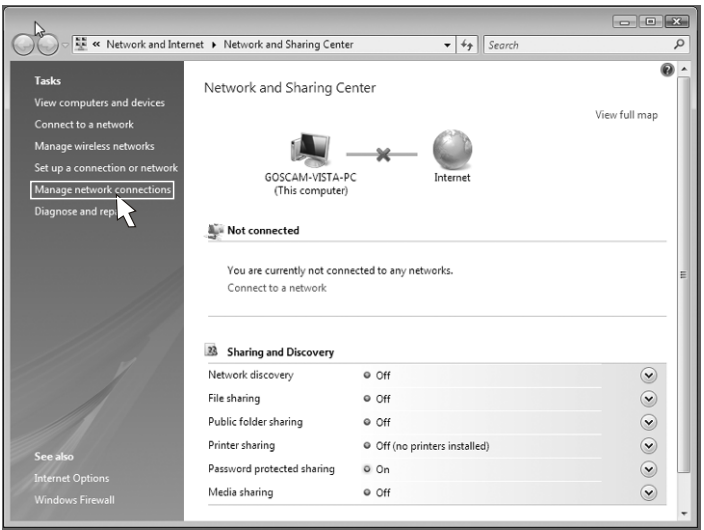
User computer's network settings

(1) operating system of your PC is microsoft windows vista:

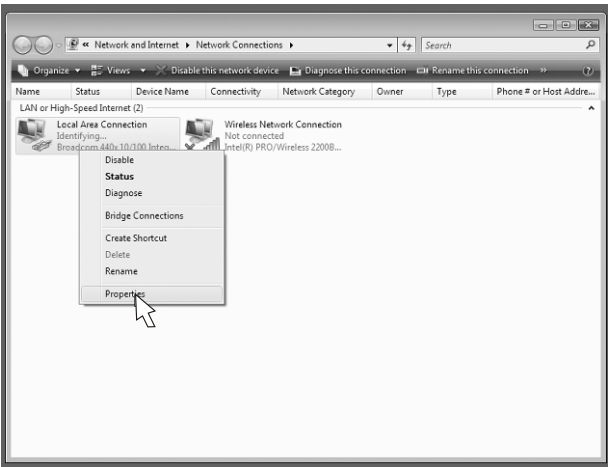
1. Right click <Network > icon on the desktop as following:



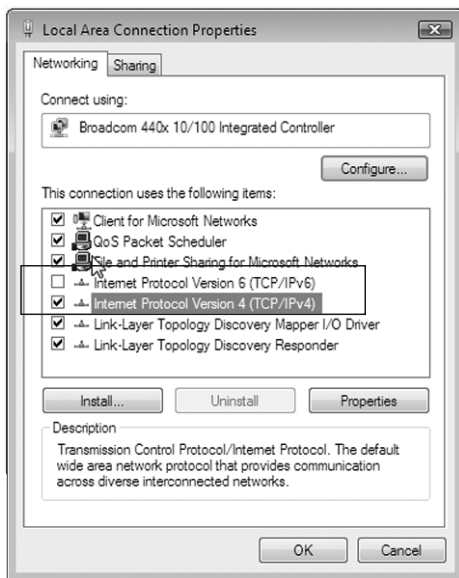
2. Click <Properties>, enter <Network and Sharing Center>interface as following:



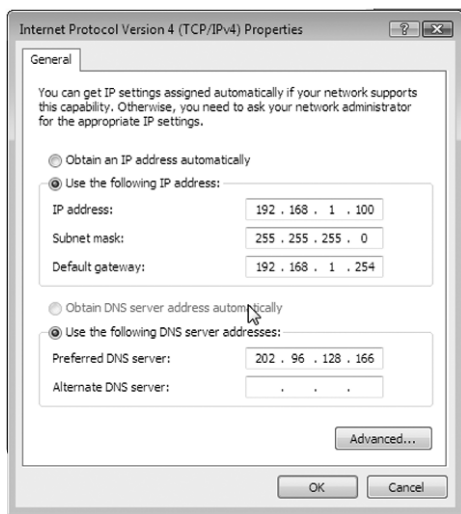
3. Double Click <Manage network connections>, enter <Network Connections> interface as following:



4. Right Click <Local Area Connection>, then click <Properties>,enter <Local Area Connection Properties>interface as following:



5. Note: IP camera nosupport IPV6 Protocol Version6, please cancel the <Internet Protocol Version6 (TCP/IPV6)>, then Select and double click<Internet Protocol Version4(TCP/IPv4)>.



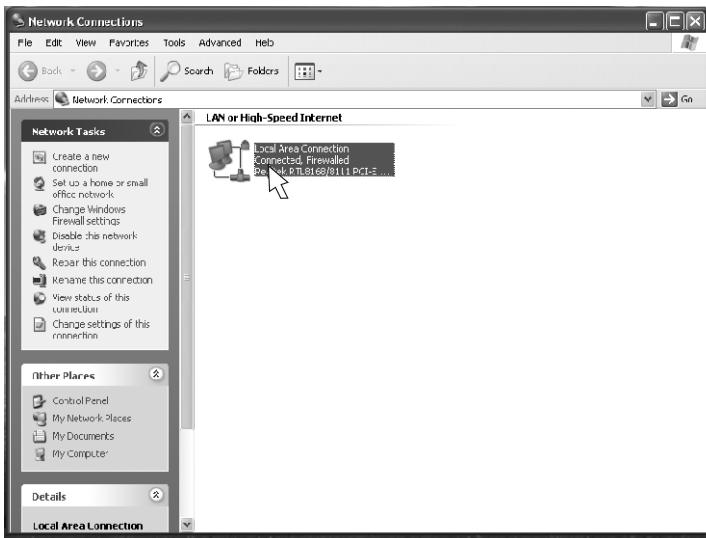
6. Manual set the IP address of your PC in the LAN, eg: 192.168.1.100, Other settings can refer to the figure above.

(2) Operating System of Your PC is Microsoft Windows XP or Windows 2000:

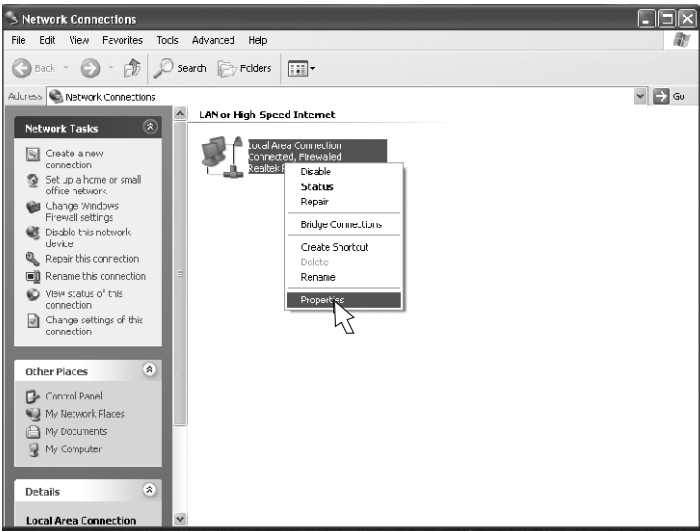
1. Right click <**Network**> icon as following:



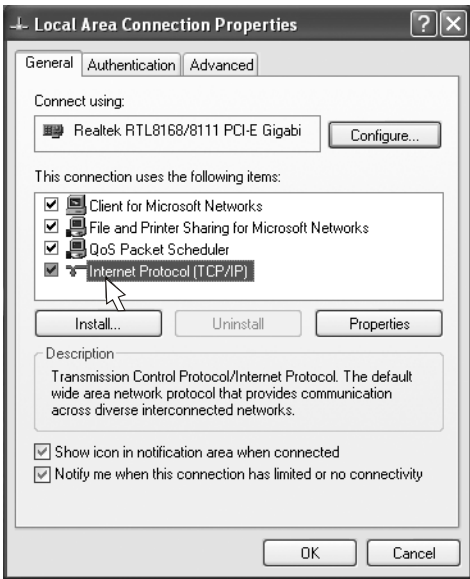
2. click <**Properties**> as following:



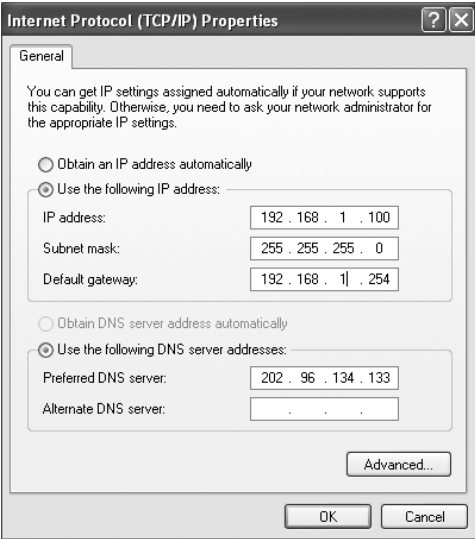
3. Right click <Local Area Connection > as following:



4. Click <Properties > as following:



5. Double click <**Internet Protocol(TCP/IP)**> as following:



6. Set the LAN address of your PC , such as: 192.168.1.100, other parameter as above.

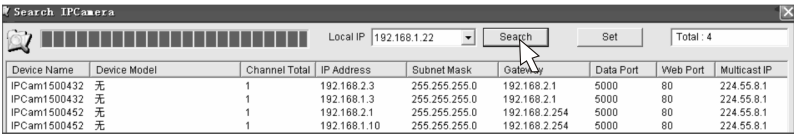
Default Parameters

IP address:192.168.1.1 Subnet mask:255.255.255. 0 Gateway:192.168.1.254
COM port:5000 Web port: 80
User name: admin Password: admin

Use the SearchIPCamera Software to Search IP Camera in the LAN and Setting IP Address for IP Camera

Use the SearchIPCamera software to Search IP camera in the LAN

- 1. Insert the CD contained in the packaging box of the IP Camera in the CD-ROM drive of the PC and copy the configuration tool **SearchIPCamera.exe** to your PC. Double click the file to run the software. The following interface appears:

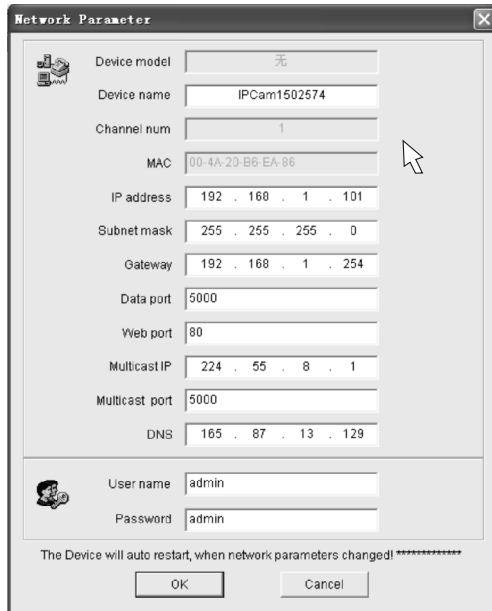


- 2. <**Local IP**> displays the local IP address of the computer. If there are more than one ethernet cards in the computer, or, more than one IP address, please choose anyone of them to connect to the camera.
- 3. Click <**Search**> to search a new IP camera in the LAN.

4. The window will display a list of network/IP cameras in the local network. Choose the one you want to define and modify the settings. The name of camera will be such as IPCam1500432.

Setting IP Address for IP Camera

1. To support the access, the IP address of the PC and that of the IP Camera must be in the same network section. If you do not want to change the IP address of the PC, it is required to re-set the IP address of the IP Camera.
2. Select the IP Camera to access and click **<Set>**, or double click the IP Camera to set the IP address information, as shown in the figure below:



3. After modifying network parameters, click **<OK>**. The system will give the following prompt, then Click **<OK>**, and the IP Camera will restart automatically:



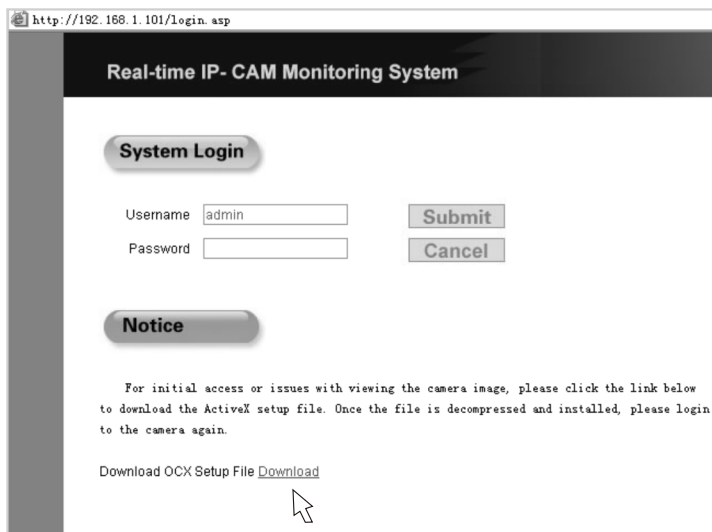
Use the SearchDVS to search & set the IP camera

Also we provide SearchDVS as another method to Search the IP camera:

1. Insert the CD inside the camera package into CD-ROM of your PC, and find the IP Camera configuration tool **SearchDVS.EXE**. Copy it to your PC, double click to install. If the software cannot be installed normally, run the patch file **credist_x86.exe** in the CD.
2. For detailed uses of the **SearchDVS** software, refer to the **SearchDVS User Manual** in the CD.

DOWNLOAD AND INSTALL THE PLUG-INS

1. If it is the first time to use the IE (Internet Explorer) to access the IP Camera, plug-ins shall be installed. Enter the IP Camera address in the address bar of the IE (such as: 192.168.1.101), enters logging surface of IP camera:

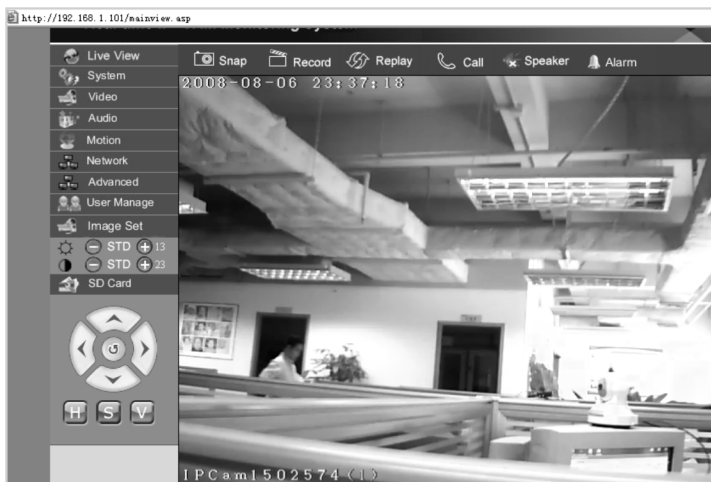


2. Click left bottom <Download>, choose <Run> or <Save> to download, Completed after double-click download files **xoview.exe**.
3. Close all IE pages and click <Install>, the OCX plug-in will be install automatically, Completed after prompt <Install OK>, indicated that the plug-in unit installs completes successfully.



LOGIN VISIT

Enter the IP address of the IP Camera in the address bar of the Internet Explorer (IE) to log on to the IP Camera. Enter the user name and password (default user name and password: **admin**), and click <OK> to enter the real time video interface,



* Network cameras detailed description refer to user manual in the CD-ROM.

INSTALLATION

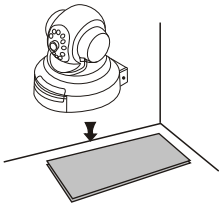


Before installing and using the product, please read the following precautions carefully and make sure they are fully understood.

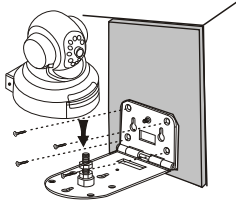
- * Use only the power adapter attached with the product. Use of unauthorized power a dapter may cause damage to your IP Camera;
 - * Do not touch the lens of the IP Camera for it may leave fingerprint or stain on the lens and will cause vague;
 - * Do not turn the lens of the IP Camera at will. The optimum focus range has been set before the IP Camera is delivered out of the factory. If you turn the lens, it may cause incorrect focus and vague images.
 - * Do not turn the Pan/Tilt by force for it may cause damage to internal components of the Pan/Tilt.
 - * IP Camera terminal shall be installed in an indoor environment.
 - * For firmware upgrading or connection with an external alarm, refer to detailed instructions contained in the CD.
1. This product can be placed, hanging, the user can place in accordance with the requirements of the installation choose the right way to install.
 2. Horizontal installation: Select a position on a horizontal surface and place the IP Camera directly on the horizontal surface.

3. Suspended installation: Install the bracket to proper position on the wall, or settled upside down under the ceiling; Root the special screw to the 1/4" screw hole on the bottom of camera.

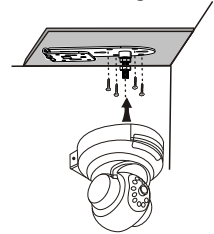
Floor board



On wall



Under ceiling



FAQ

1. Failure in accessing IP Camera via IE

Possible cause 1: Network interruption?

Solution: Use a PC to access the network to test whether the network access is normal. First remove cable fault, network fault caused by viruses until mutual successful pinging between the IP Camera and PC.

Possible cause 2: IP address occupied by other device?

Solution: Disconnect the connection between the IP Camera and the network, independently connect the IP Camera to the PC, and reset the IP address according to proper recommendations.

Possible cause 3: IP address in a different subnet?

Solution: Check the settings of IP address and subnet mask address of the Server, as well as the gateway settings.

Possible cause 4: Any conflict between the physical address over the network and the IP Camera?

Solution: Change the physical address of the IP Camera.

Possible cause 5: Web port changed?

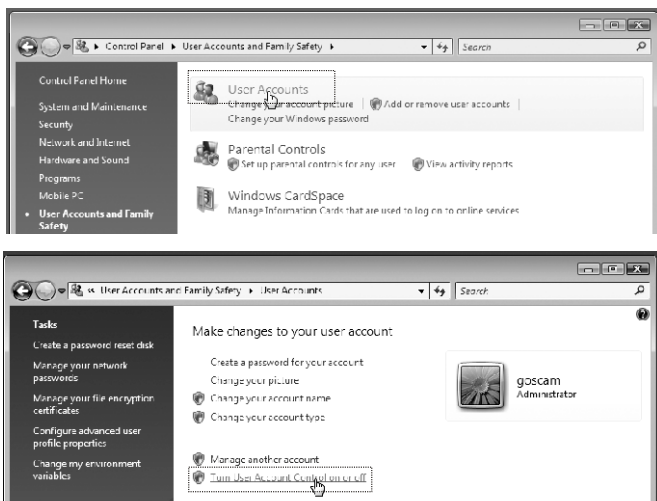
Solution: Contact the administrator to obtain related port information.

2. Note the following questions in Vista system !

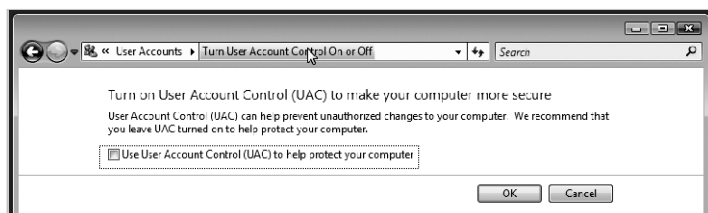
In Vista system, may be unable to visit the image or video file can not be saved, the solutions are as follows:

(1) turn off UAC

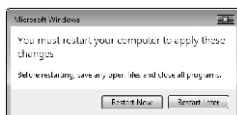
1. Select **<Control Panel-User Accounts and Family Safety-User Accounts-turn User Account Control on or off>** :



2. Cancel **<use User Account Control(UAC) to Help Protect Your Computer>**, then click **<OK>**.

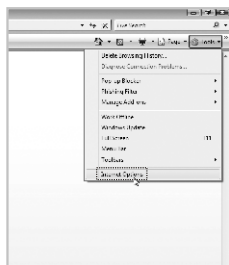


3. Click **<restart now>**. You must restart your computer to apply these changes.

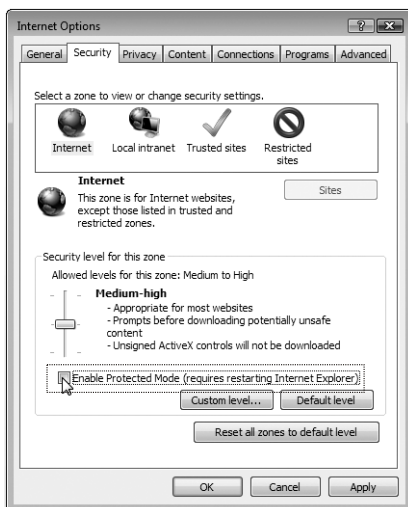


(2). Turn off protected mode

1. Select <IE Browser-Tools-Internet Options>:



2. Select <**security-Internet**>, cancel <**Enable Protected Mode (requires restarting Internet Explorer)**>, click <**OK**>, then restarting Internet Explorer



3. No display in the IE Browser

Possible cause: No OCX plug-in installed . when it is the first time to use the IE to access the IP Camera, the OCX plug-in shall be installed.

4. Forgetting password

Solution: Press and hold <**RESET**> in 5 seconds to restore all parameters to their default values.

Note: Those who are not service-trained professionals shall not press the <**RESET**> key. After resetting, all parameters will be recovered to their default values (excluding the physical address of the network).

FCC INFORMATION

This device complies with part 15 of the FCC Rules. Operation is subject to the following two conditions:

- (1) this device may not cause harmful interference.
 - (2) this device must accept any interference received, including interference that may cause undesired operation.
- Changes or modifications not expressly approved by the party responsible for compliance could void the user's authority to operate the equipment.

CAUTIONS

- The apparatus shall not be exposed to dripping or splashing and that no objects filled with liquids, such as vases, shall be placed on the apparatus.
- Turn off the camera/receiver if the system is not in use.
- The adapter is used as the disconnect device from the mains. The adapter shall remain readily operable.
- The camera/receiver can only be completely disconnected from the mains by unplug the adapter.
- Do not cut the DC power cable of the apparatus to fit with another power source.
- Attention should be drawn to the environment aspects of battery disposal.

EU Environmental Protection

Waste electrical products should not be disposed of with household waste. Please recycle where facilities exist. Check with your local authority or retailer for recycling advice.

